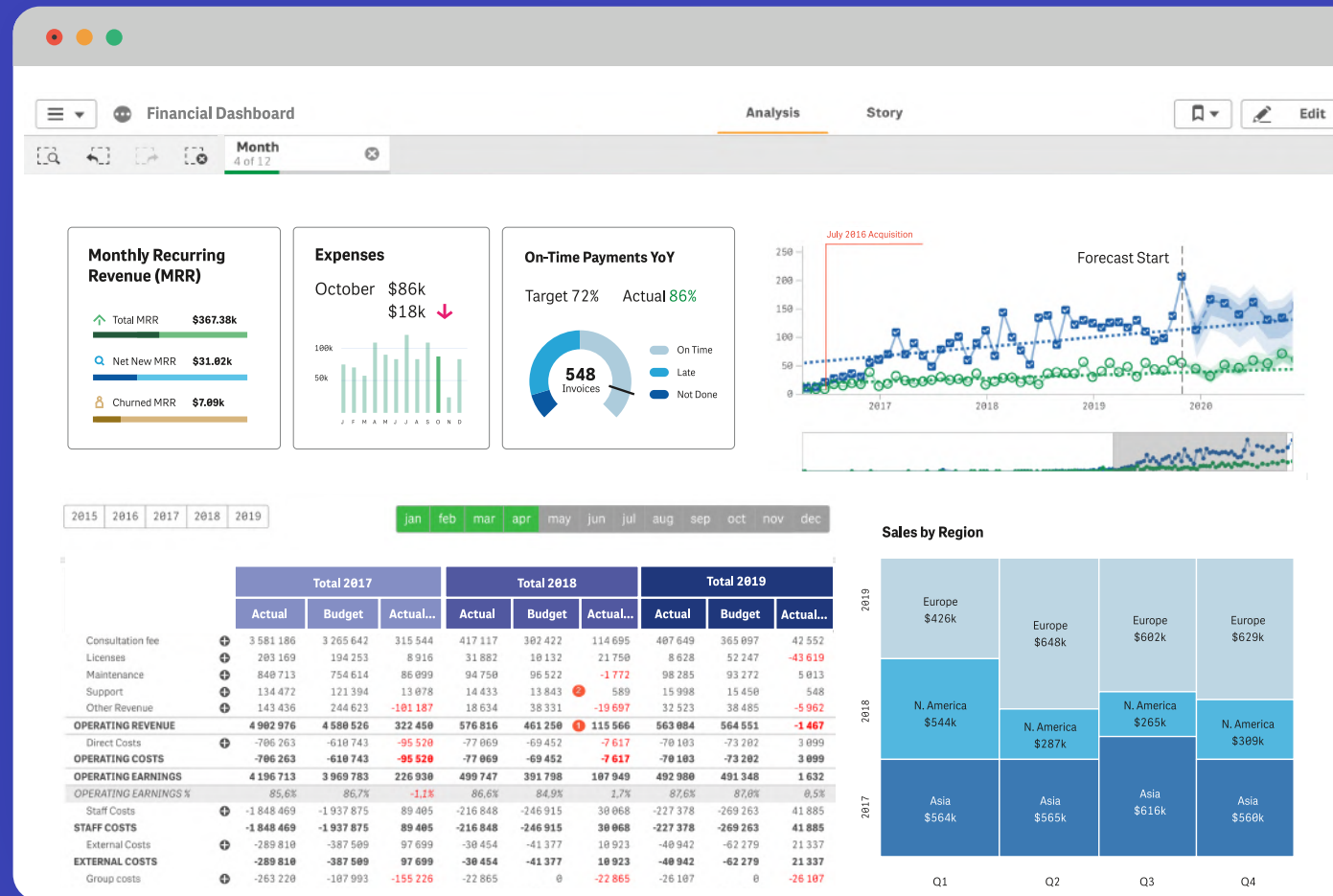




library  
vizlib

By far the most powerful  
dashboarding and visual  
analytics product for Qlik Sense.





## vizlib library

Leveraging our no-code approach and incredibly intuitive user experience, BI teams can save countless development hours and deliver solutions that take organisations from data reporting to data storytelling in no time.



### Essential Charts

The go-to multitasking charts for your dashboards.



### Advanced Charts

Vizlib's advanced charts combine beauty with functional prowess



### Tables

Nothing beats the organisational bliss that comes from tables



### Navigation Tools

Our navigational extensions redefine the dashboarding experience



### UX Components

Built to help you create a more intuitive user experience, Vizlib's UX component extensions are fully customisable and inherently powerful

# vizlib capabilities

Move faster and achieve more with our next-level capabilities that dramatically extend Qlik's native functionalities.

Note: all Vizlib Library capabilities provide full control over interactivity, are fully customisable, and enable the user to **turn off** native QS functionality.



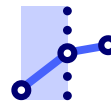
## Viztips

Insert customised, dynamic charts in your tooltips to create an intuitive, in-context drill-down experience on hover.



## Templates

Design, save and share branded chart designs with your teams to cut down the development time and create a consistent look across all your apps.



## Advanced Analytics

Vizlib Advanced Analytics helps organisations run forecasts and cluster analysis in Qlik at the click of a button. Make strategic decisions for the future by analysing and projecting past data patterns to map future data points. From forecasting insights to agile actions and business growth!



## Actions

Vizlib Actions help you create a guided analytics experience with a vast list of predefined actions. Leverage the API integration, export data on demand, make seamless selections or create custom buttons that make it easy to explore and analyse data.



# Essential Charts

The essential chart collection  
that adds the fun to fundamental

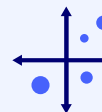
Up your data visualisation game with advanced capabilities for the most popular dashboarding extensions. Add reference lines, custom HTML tooltips, benchmark bars, support for alternate states, customisable backgrounds and more! And, you get instant access to our advanced capabilities like Vizlib Viztips and integrated advanced analytics for effortless forecasting and clustering.



Pie Chart



Bar Chart



Scatter Chart



Line Chart



Combo Chart

Essential Charts



# vizlib Pie Chart

The Vizlib Pie Chart gives you unlimited customisation possibilities. Packed with advanced features, such as custom colour palettes, enhanced tooltips, smart legend positioning, rich formatting and full interactivity control.

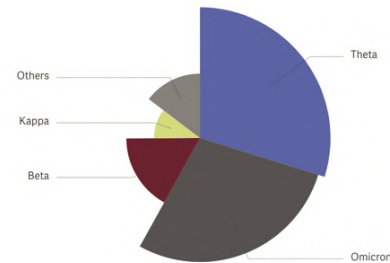
## Main Features:

- Supports Legend Control
- Powerful tooltip
- Wide range of colour palettes
- Custom Totals
- Include context on existing measures

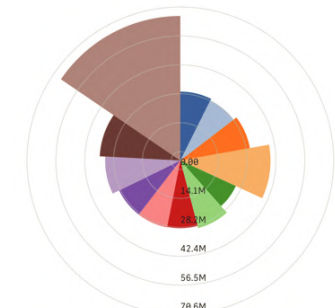
## Capabilities:



Actions

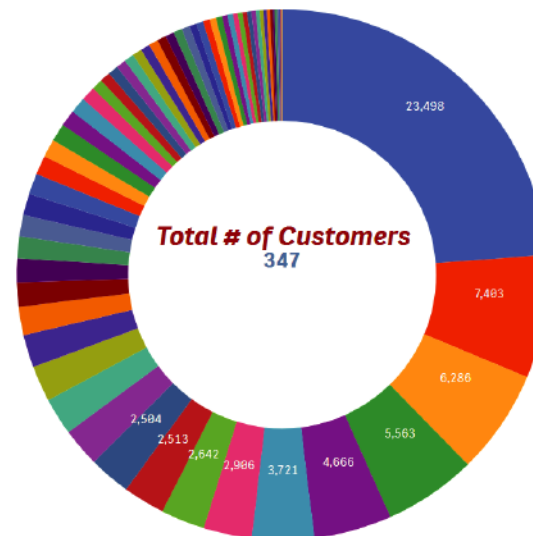


③ Brand ▲



Jan Feb Mar Apr May Jun Jul Aug Sep Oct Nov Dec

① Month ▲

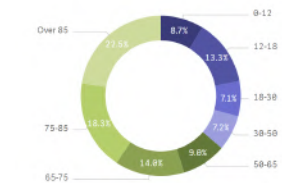


Total # of Customers  
347

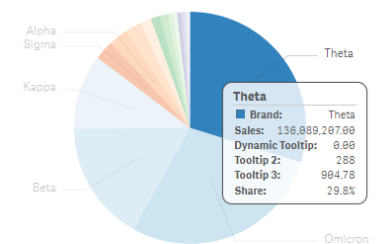
Sales \$ by Sales Rep

Judy Thurman TAGNology Cheryl Siscock John Greg Brenda Gibson Brad Taylor Amanda Honda

Avg Cost Per patient by Age Group



Age Groups



Brand

## Essential Charts



## vizlib Bar Chart

The Vizlib Bar Chart supports either two dimensions and one metric, or one dimension and multiple metrics. It gives you full control over formatting, display, bar type presentation, addition of markers and icons, colouring, dynamic interactivity behaviour and the axis, dramatically improving the standard capabilities of the native Qlik Sense Object.

### Main Features:

- Supports Legend Control
- Powerful tooltip
- Wide range of colour palettes
- Custom Totals
- Include context on existing measures

### Capabilities:



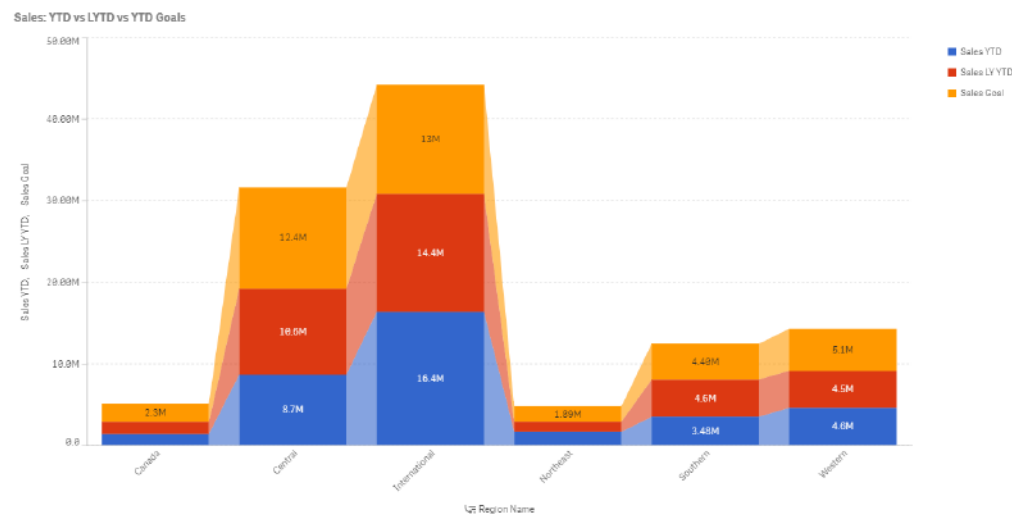
Actions



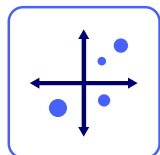
Templates



Viztips



## Essential Charts



## vizlib Scatter Chart

Create powerful data visualisations by displaying the relationship between two quantitative measures for different categories as well as a third dimension of data using size and colour for your data points.

You can cluster data points, add reference objects for more context as well as leverage number abbreviation support, negative value formatting and zooming.

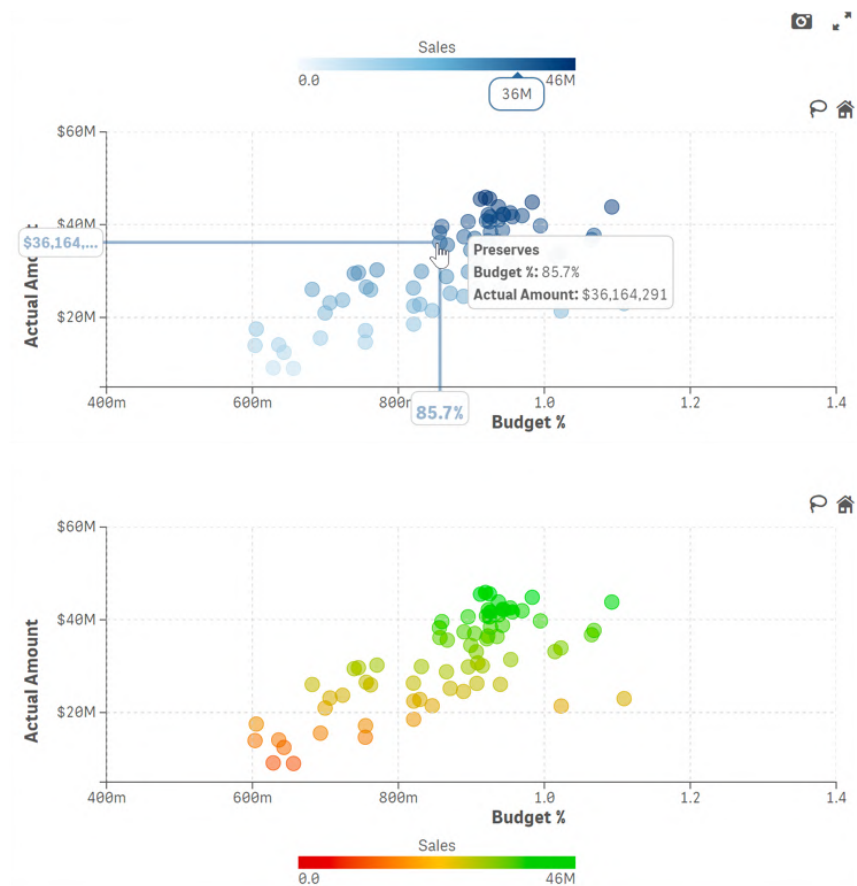
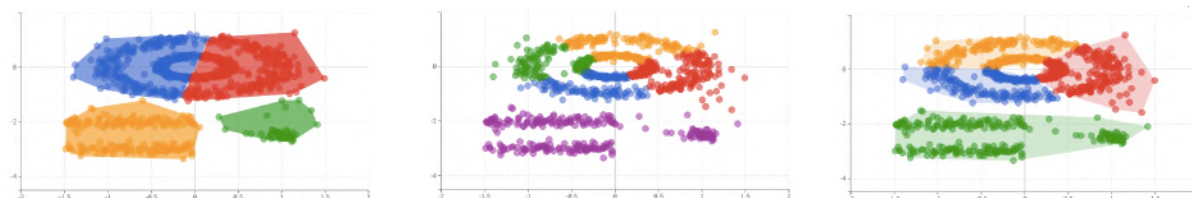
### Main Features:

- Supports Legend Control
- Powerful tooltip
- Wide range of colour palettes
- Custom Totals
- Include context on existing measures

### Capabilities:



Advanced Analytics



Essential Charts



# vizlib Line Chart

Embed images or reference objects with Vizlib Line Chart. And you can forecast and use custom definition periods, font and size control, custom colours, Pie/Donut Chart for total split and more!

## Main Features:

- Supports Legend Control
- Powerful tooltip
- Wide range of colour palettes
- Custom Totals
- Include context on existing measures

## Capabilities:



Actions

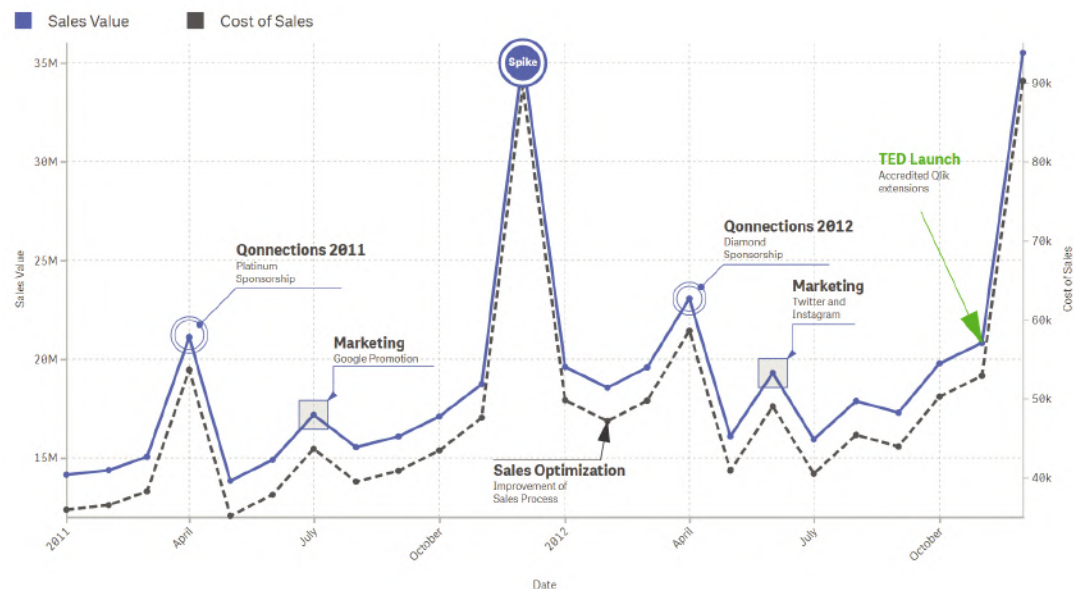
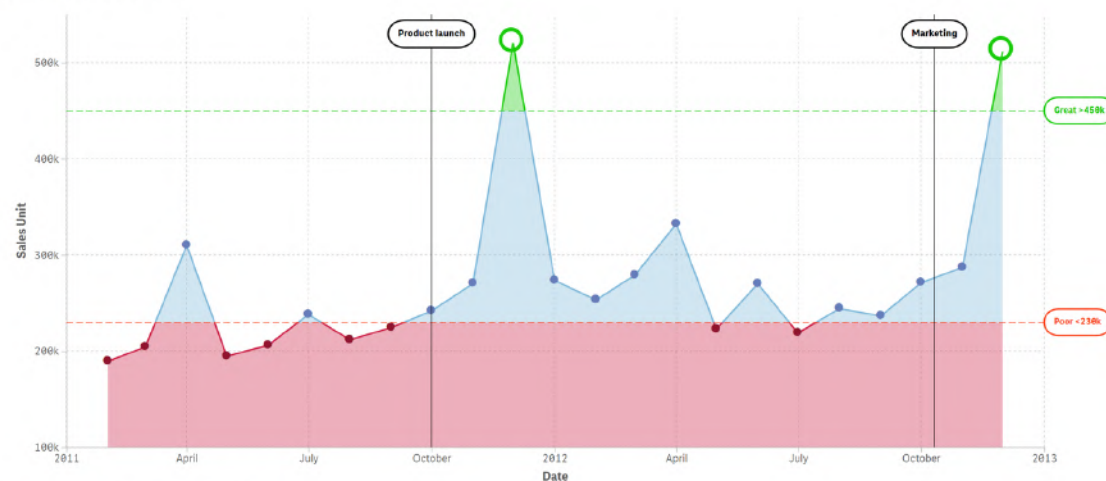


Templates



Advanced Analytics

Sales Unit performance over time





## Essential Charts



# vizlib Combo Chart

Combining many of the most powerful features of the Vizlib Bar Chart and Line Chart, the Vizlib Combo Chart enables you to extract more meaningful insights at a glance. Add a benchmark, reference lines and interactivity to enrich your data with more context. You can also control the formatting, display, line or bar type presentation and add markers or icons.

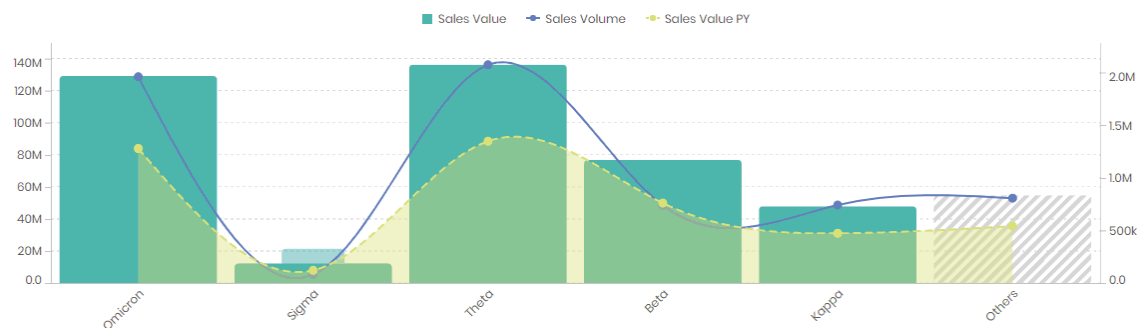
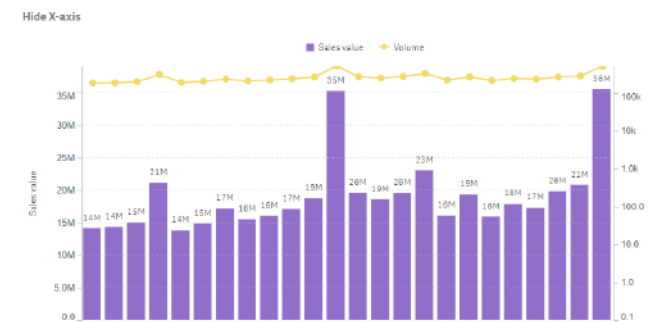
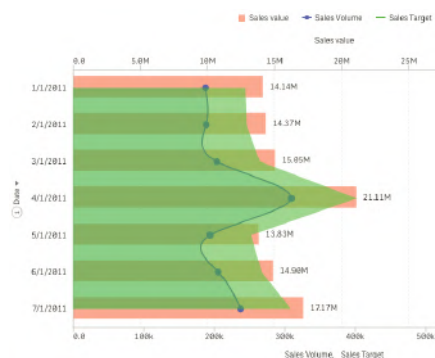
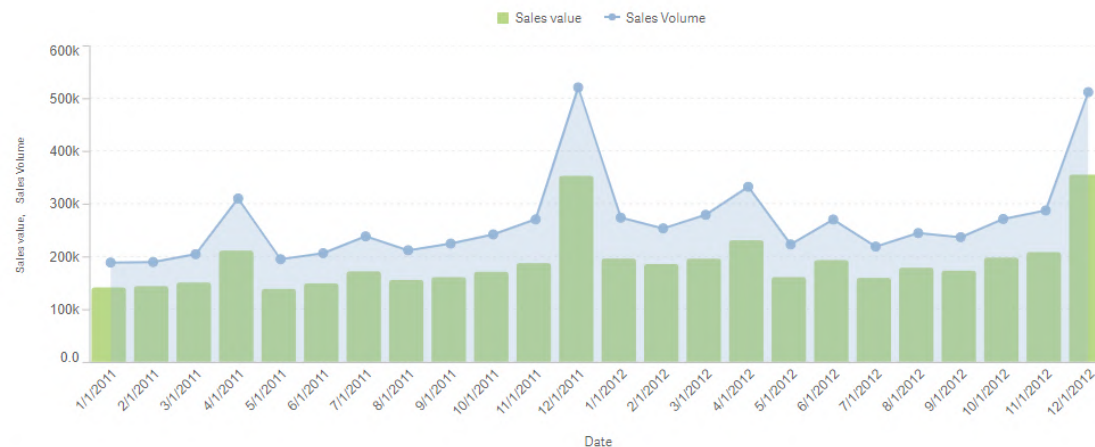
## Main Features:

- Supports Legend Control
- Powerful tooltip
- Wide range of colour palettes
- Custom Totals
- Include context on existing measures

## Capabilities:



Viztips





# Advanced Charts

Vizlib's advanced charts combine beauty with functional prowess

Make your dashboards more dynamic with full control over interactivity options and rich formatting. Tap into the power of guided analytics by leveraging Vizlib Actions and dynamic visibility conditions. Don't stop at basic charts, supercharge them!



KPI Designer



Sankey Chart



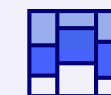
Activity Gauge



Heatmap



Venn Diagram



Mekko Chart



Story Timeline

Advanced Charts



## vizlib KPI Designer

Vizlib KPI Designer helps you visualise KPI performance and introduces a revolutionary layering concept. It gives you the freedom to fashion your ideal KPI Objects with the precision of designer tools. Combine Vizlib KPI Designer with Viztips to add customised, dynamic charts in your tooltips!

### Main Features:

- Eleven custom layers to create your KPI Objects
- Support for multiple actions on a layer level or as a global setting
- Rich customisation and formatting options
- Presets to fast-track the design process
- Pixel-perfect positioning of layers and responsive design

### Capabilities:



Actions



Templates



### Healthcare

^ **95.1%**

% Wait time target

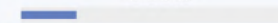


Target: 95.0% patients seen in under 4 hours



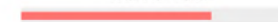
**\$120k**

Costs



**\$1.2M**

Revenue



**1,568**

Sales



Templates

#### Vizlib KPI Designer Templates

Vizlib	Published in Vizlib	My Templates (3)
<input type="text" value="Search"/>		
<div>Example Title</div> <div>Customer Retention</div>	<div>Mkt</div> <div>32.3%</div> <div>Yearly 1.4%</div> <div>Market Share %</div>	<div>Month Avg 8.9%</div> <div>22 mins</div> <div>Time Quality # Num</div> <div>Support Resolution</div>

Ready to publish a new template? Notify your admin.

Close

## ⚙️ Advanced Charts



# vizlib

## Sankey Chart

The Vizlib Sankey Chart enables you to create and visualise flows and splits between your data. It is easy-to-use, intuitive and helps steer the data story to the right insights. You can get a high-level view of your data or drill down into specifics.

### Main Features:

- Responsive sizing
- User-friendly functionality
- Highly customisable
- Transitions between selection states
- Innovative interactivity modes like zooming and rearranging dimensions
- Conditional show/hide of dimensions

Advanced Charts



## vizlib Activity Gauge

Vizlib Activity Gauge helps you track the progress of business goals. Compare multiple quantitative measures or one quantitative measure split by categories. Explore the relative performance of categories for a direct visual comparison in radial bars.

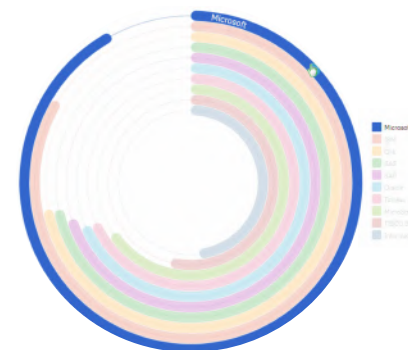
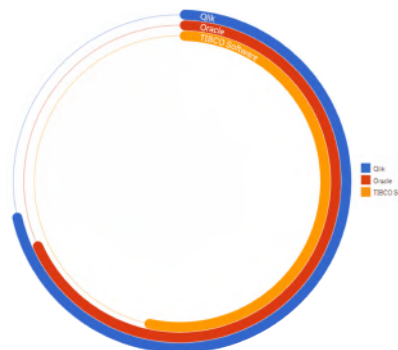
### Main Features:

- View 1 dimension and 1 Metric, or up to 10 different metrics
- Full customisability on the arc width, corner rounding, distance
- Interactivity - Make selections either in the chart or in the legend

### Capabilities:



Actions



## Advanced Charts



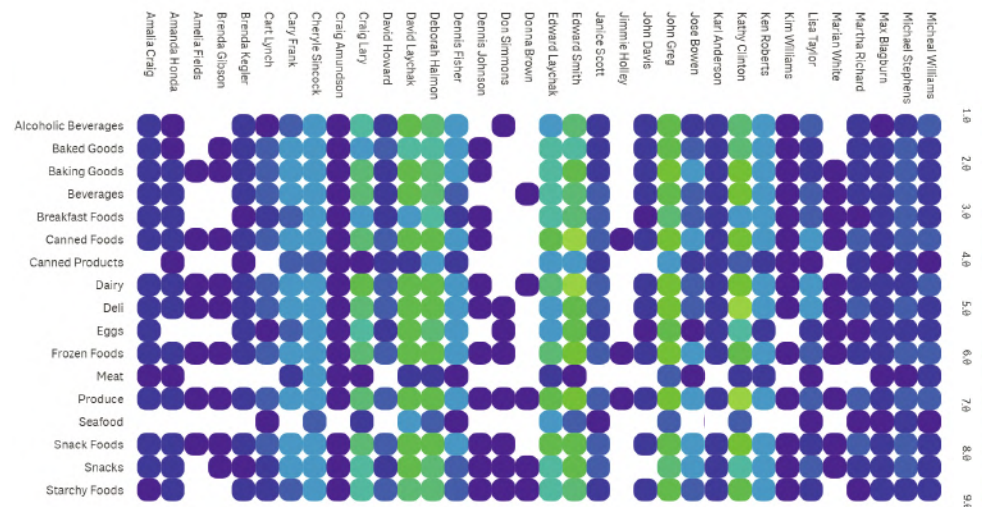
# vizlib Heatmap

Vizlib Heatmap provides a graphical representation of your data. It displays individual values as colours based on a specific measure and enables insights at a glance. Analyse large, complex data sets with Vizlib Heatmap, with its easy-to-interpret colour-coded format.

## Main Features:

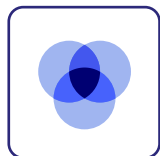
- Custom colour palettes
- Enhanced tooltips
- Smart legend positioning
- Configurable reference lines

Customers that make up over 5% of Sales





## Advanced Charts



## vizlib Venn Diagram

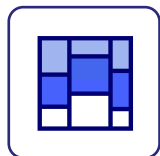
Vizlib Venn Diagram helps to collate data visually. By simply dragging and dropping available dimensions and metrics you can immediately create visual representations of interrelations of data. Analyse findings, identify the logical relationships between data sets and make insightful decisions with Vizlib Venn Diagram.

**Main Features:**

- Automatic rendering based on your data selections
- Label formatting
- Colour and circle formatting



## Advanced Charts

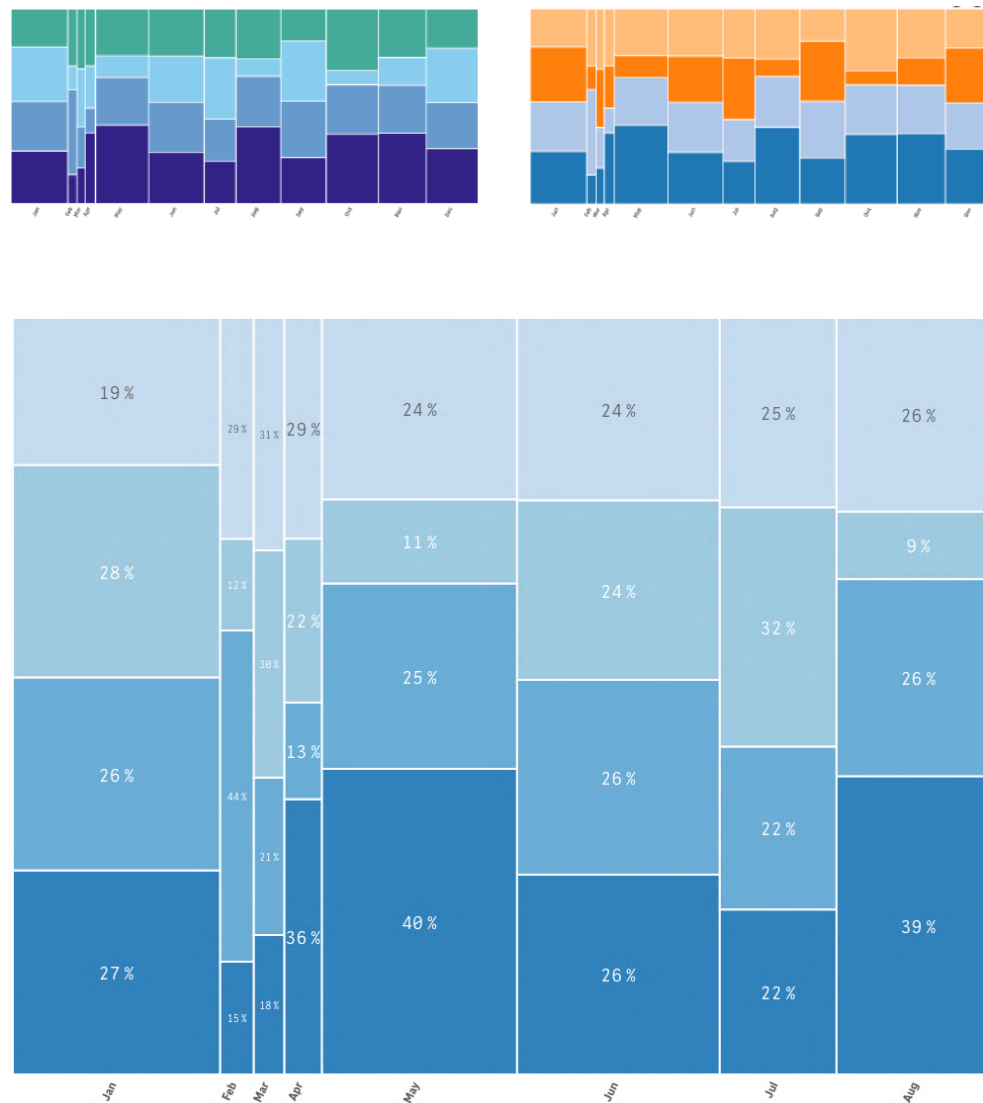


## vizlib Mekko Chart

Vizlib Mekko Chart provides users with an easy way to visualise categorical data over a pair of variables, facilitating smart decision-making. Quickly assess the part-to-whole relationships across two variables and have the confidence to explore promising opportunities the chart data reveals.

**Main Features:**

- A variable-width stacked column chart
- Shows part-to-whole relationships across two variables at once
- Conditional colours by expression





Advanced Charts

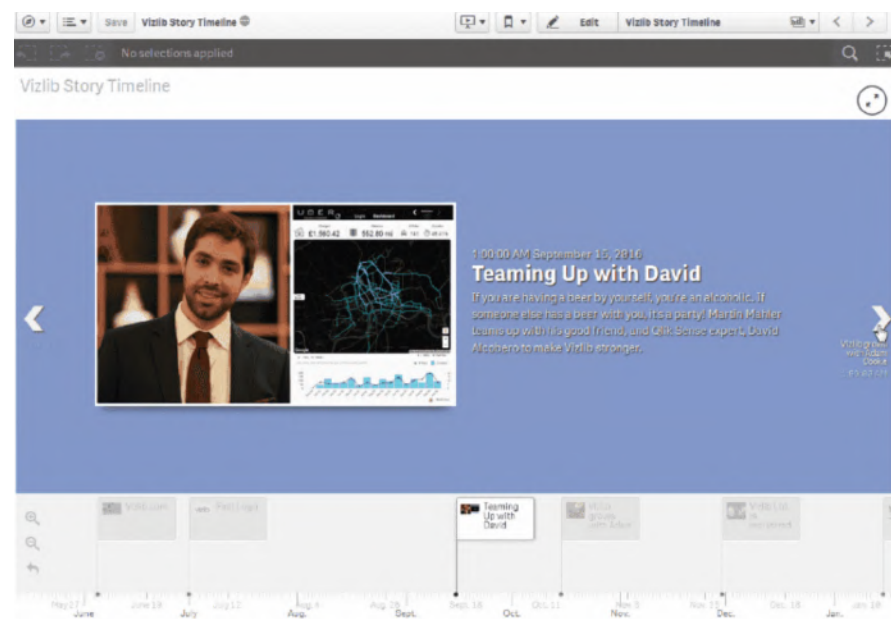


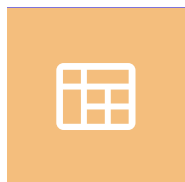
## vizlib Story Timeline

Vizlib Story Timeline helps you tell a data story in an easy-to-follow visual sequence. Create visual, media-rich timelines in Qlik Sense to flick through the event markers or milestones of your dashboard story. And, since it incorporates the power of Qlik's associative engine, you have speed on your side!

### Main Features:

- Support for multiple media types
- View the stages in a project for sound project management
- Visualise business interactions like customer and sales rep relationships





# Tables

Nothing beats the organisational bliss that comes from tables

Our famous straight and pivot tables give you the power to arrange and visualise your data in a way that's easy to read, analyse and action. With added capabilities, such as HTML tooltips, dynamic column resizing, indicators, rich formatting and many more, you'll be creating tables that wow in no time.



Table



Pivot Table

Tables



# vizlib Table

The Vizlib Table is a powerful, feature-rich and highly customisable table capability for Qlik Sense. You can add sparkline and mini charts on each line, merge cells, enable the table wizard and presets, control header formatting and enjoy support for dynamic labels and HTML.

## Main Features:

- Horizontal column scrolling
- Full colour and alignment control
- Sparkline charts / mini charts on each line
- Header formatting and dynamic label support

## Capabilities:



Actions



Templates

Team	Season	Rank	Team	Played	Won	Drawn	Lost	GF	GA	GD	Points	Form
Man City	2017/18	1	Man City	24	21	2	1	70	18	52	65	W 0-1 D 0-0 W 3-1 L 4-3 W 3-1
Man United	2017/18	2	Man United	24	16	5	3	49	16	33	53	D 2-2 D 0-0 W 0-2 W 3-0 W 0-1
Chelsea	2017/18	3	Chelsea	24	15	5	4	45	16	29	50	W 2-0 W 5-0 D 2-2 D 0-0 W 0-4
Liverpool	2017/18	4	Liverpool	23	13	8	2	54	28	26	47	D 3-3 W 5-0 W 1-2 W 1-0 W 4-3
Tottenham	2017/18	5	Tottenham	24	13	6	5	47	22	25	45	W 3-2 W 0-2 D 1-1 W 4-0 D 1-1
Arsenal	2017/18	6	Arsenal	24	12	6	6	45	31	14	42	W 3-3 D 1-1 D 2-2 L 2-1 W 4-1
Leicester	2017/18	7	Leicester	24	9	7	8	36	32	4	34	L 1-1 L 2-1 W 3-0 D 0-0 W 2-0
Burnley	2017/18	8	Burnley	24	9	7	8	19	21	-2	34	D 2-2 D 0-0 L 1-2 L 1-0 L 0-1
Everton	2017/18	9	Everton	24	7	7	10	26	39	-13	28	D 0-0 L 2-1 L 0-2 L 4-0 D 1-1
Watford	2017/18	10	Watford	24	7	5	12	33	44	-11	26	W 2-1 L 1-2 L 2-1 D 2-2 L 2-0
West Ham	2017/18	11	West Ham	24	6	8	10	30	42	-12	26	D 3-3 W 2-1 D 1-1 W 1-4 D 1-1
Bournemouth	2017/18	12	Bournemouth	24	6	7	11	25	36	-11	25	D 3-3 W 2-1 D 2-2 W 2-1 D 1-1

	Country	Actual vs Target	\$ YTD	YoY	Year To Date daily trend
			\$10,070,158	17.9%	
	Germany		\$1,538,377	-7.4% ↓	
	Italy		\$1,136,690	19.3% ↑	
	Mexico		\$1,091,109	-3.4% ↓	
	Spain		\$978,244	-12.6% ↓	
	Thailand		\$1,584,738	3.5% ↑	
	United Kingdom		\$1,547,718	78.2% ↑	
	United States		\$2,193,282	47.9% ↑	

## Tables



# vizlib

## Pivot Table

The Vizlib Pivot Table for Qlik Sense is a powerful solution for summarising data and effortlessly extracting significant insights from extensive, detailed data sets. And, it's loaded with impressive features, such as dynamic labels, indicators, font and size control, pivot styles and more.

### Main Features:

- Conditional show/hide of dimensions and measures
- Indentation or fully expanded Pivot styles
- Measure indicators to highlight changes or growth

### Capabilities:



Templates

Product Sub Group Desc	Jan					
	LY Sales	Revenue	Sales Quantity	CY Sales	LY Sales	Revenue
➤ Anchovies	487.93 ↗	21,825.25 ↘	975 ↗	21,341 ↘	0.00 ↗	5,727.20
➤ Bagels	717.68 ↗	3,177.69 ↘	18 ↘	2,460 ↘	181.23 ↗	378.88
➤ Beer	9,532.42 ↗	13,786.55 ↘	103 ↘	445 ↘	775.64 ↗	23,125.03
➤ Bologna	312,897.02 ↗	486,771.66 ↘	12,715 ↗	17,794 ↘	167,377.72 ↗	447,694.19
➤ Canned Fruit	2,769.35 ↗	10,990.17 ↘	606 ↗	7,583 ↘	817.61 ↗	42,224.99
➤ Canned Vegetables	33,464.41 ↗	75,092.83 ↘	835 ↗	27,797 ↘	14,814.43 ↗	32,892.77
➤ Cereal	153,624.48 ↗	159,552.09 ↘	787 ↗	3,336 ↘	1,741.47 ↗	17,804.39
➤ Cheese	85,040.04 ↗	261,543.49 ↘	7,075 ↗	115,829 ↘	33,647.84 ↗	157,857.28
➤ Chips	212,877.48 ↗	390,223.64 ↘	2,995 ↗	115,735 ↘	70,061.78 ↗	300,982.88
➤ Chocolate	0.00 ↗	68.38 ↘	5 ↘	25 ↘	0.00 ↗	115.07
➤ Chocolate Candy	25,109.15 ↗	45,093.99 ↘	155 ↘	11,713 ↘	13,749.85 ↗	46,156.97
➤ Clams	519.02 ↗	1,718.80 ↘	28 ↘	536 ↘	110.38 ↗	783.20
➤ Coffee	146,413.49 ↗	593,477.34 ↘	3,325 ↗	291,371 ↘	226,246.43 ↗	493,775.52
➤ Cookies	20,266.80 ↗	73,203.91 ↘	1,260 ↗	41,854 ↘	6,321.19 ↗	29,123.51
➤ Cooking Oil	2,121.84 ↗	7,534.12 ↘	670 ↗	2,758 ↘	1,004.01 ↗	6,885.07

Vizlib P&L Table

	Total	Africa	Americas	Asia	Europe	Middle East
Service Revenue	2,996.15 ↘	501.94 ↘	503.14 ↘	502.69 ↘	500.30 ↘	506.44 ↘
Direct Cost	(1,221.38) ↘	(208.33) ↗	(200.70) ↗	(199.03) ↗	(190.71) ↗	(199.86) ↗
Sales Variable Margin	1,743.50 ↘	311.62 ↘	297.58 ↘	304.23 ↘	298.10 ↘	301.87 ↘
Sales Variable Margin%	0.61% ↘	0.60% ↗	0.60% ↘	0.58% ↘	0.61% ↘	0.60% ↘
Direct OpEx	(132.33) ↗	(21.73) ↗	(21.91) ↗	(22.62) ↗	(22.08) ↗	(22.04) ↗
Customer Operations Direct	(3.11) ↗	(0.52) ↗	(0.50) ↗	(0.52) ↗	(0.53) ↗	(0.52) ↗
Technology Direct	(86.18) ↗	(14.60) ↗	(14.93) ↗	(14.82) ↗	(14.59) ↗	(14.35) ↗
Sales, Commercial & Marketing ...	(22.12) ↗	(3.72) ↗	(3.76) ↗	(3.81) ↗	(3.70) ↗	(3.62) ↗
Support Functions Direct	(1.95) ↘	(0.31) ↗	(0.32) ↗	(0.31) ↗	(0.31) ↗	(0.31) ↗
Direct EBITDA	1,690.74 ↘	280.10 ↘	289.52 ↘	278.69 ↘	287.32 ↘	272.23 ↘
Direct EBITDA%	0.61% ↗	0.58% ↘	0.61% ↗	0.62% ↗	0.62% ↗	0.61% ↗
Indirect OpEx	(4.55) ↘	(0.79) ↗	(0.75) ↗	(0.75) ↗	(0.75) ↗	(0.78) ↗
Customer Operations Indirect	(0.10) ↘	(0.02) ↗	(0.02) ↗	(0.02) ↗	(0.02) ↗	(0.02) ↗
Technology Indirect	(2.64) ↗	(0.45) ↗	(0.45) ↗	(0.43) ↗	(0.44) ↗	(0.46) ↗
Sales, Commercial & Marketing ...	(0.39) ↗	(0.07) ↗	(0.07) ↗	(0.07) ↗	(0.07) ↗	(0.07) ↗
Support Functions Indirect	(1.55) ↘	(0.26) ↗	(0.25) ↗	(0.25) ↗	(0.25) ↗	(0.24) ↗
Total OpEx	(117.09) ↗	(19.84) ↗	(19.67) ↗	(19.59) ↗	(19.14) ↗	(20.73) ↗
OpEx% Revenue	(0.10%) ↘	(0.10%) ↘	(0.10%) ↗	(0.10%) ↘	(0.10%) ↗	(0.10%) ↘
Total EBITDA	1,698.20 ↗	281.54 ↘	293.03 ↘	281.91 ↘	288.38 ↘	295.48 ↘
Total EBITDA%	0.50% ↗	0.50% ↘	0.49% ↘	0.50% ↘	0.49% ↗	0.48% ↘



# Navigation Tools

Our navigational extensions redefine the dashboarding experience

Navigate with ease and save time with intuitive, easy-to-use navigation tools. Create web app-styled dashboards within Qlik Sense with Vizlib Sheet Menu, removing the need for complex mashup development. And accelerate your build time and improve the functionality of your dashboards with the Vizlib Container, supporting a selection of presets and a responsive grid mode.



Container Grid



Sheet Menu

## Navigation Tools



# vizlib Container Grid

The Vizlib Container Grid is the ultimate solution for saving real estate on your dashboard, better organising your charts and creating a guided analytics experience.

Leverage the range of powerful features, such as dynamic drill-down, grid mode, ability to preserve filters and customisation options, including Tabs, Accordion, Carousel and Dropdown.

## Main Features:

- Conditional show/hide of charts
- Selection of pre-set styles to choose from for each container mode, speeding up customisation
- Activate charts based on conditions such as variable values or selections

## Capabilities:

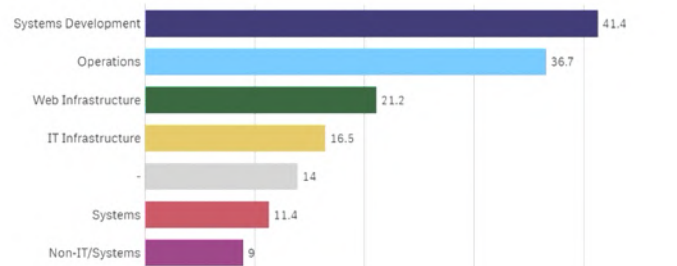


Templates

Avg Case Resolution Time (Days)

### Avg Case Resolution Time (Days)

\* color represents the priority with the most open cases



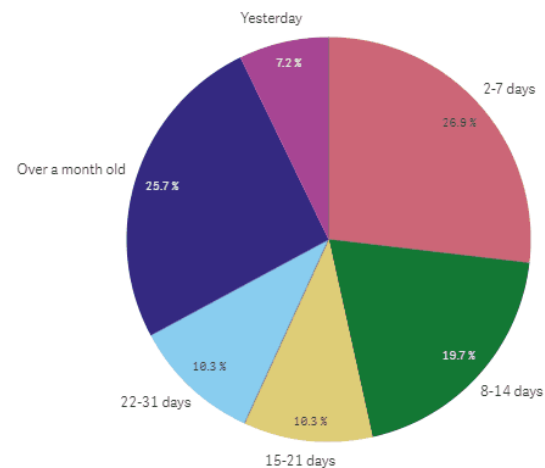
New Cases by Department over time

Open Cases vs Duration

Open Cases by Age

Resource Details

### Open Cases by Age



Navigation Tools



## vizlib Sheet Menu

Vizlib Sheet Menu enables you to create a consistent and intuitive user experience by mirroring the design of navigation bars in web apps. And save time and improve visual consistency with helpful templates.

### Main Features:

- No need for mashups – create your web app styled Qlik Sense dashboards directly in Qlik Sense, with no coding required!
- Create a more intuitive user experience with the design of top and side Navigation menus
- Support for multiple Actions

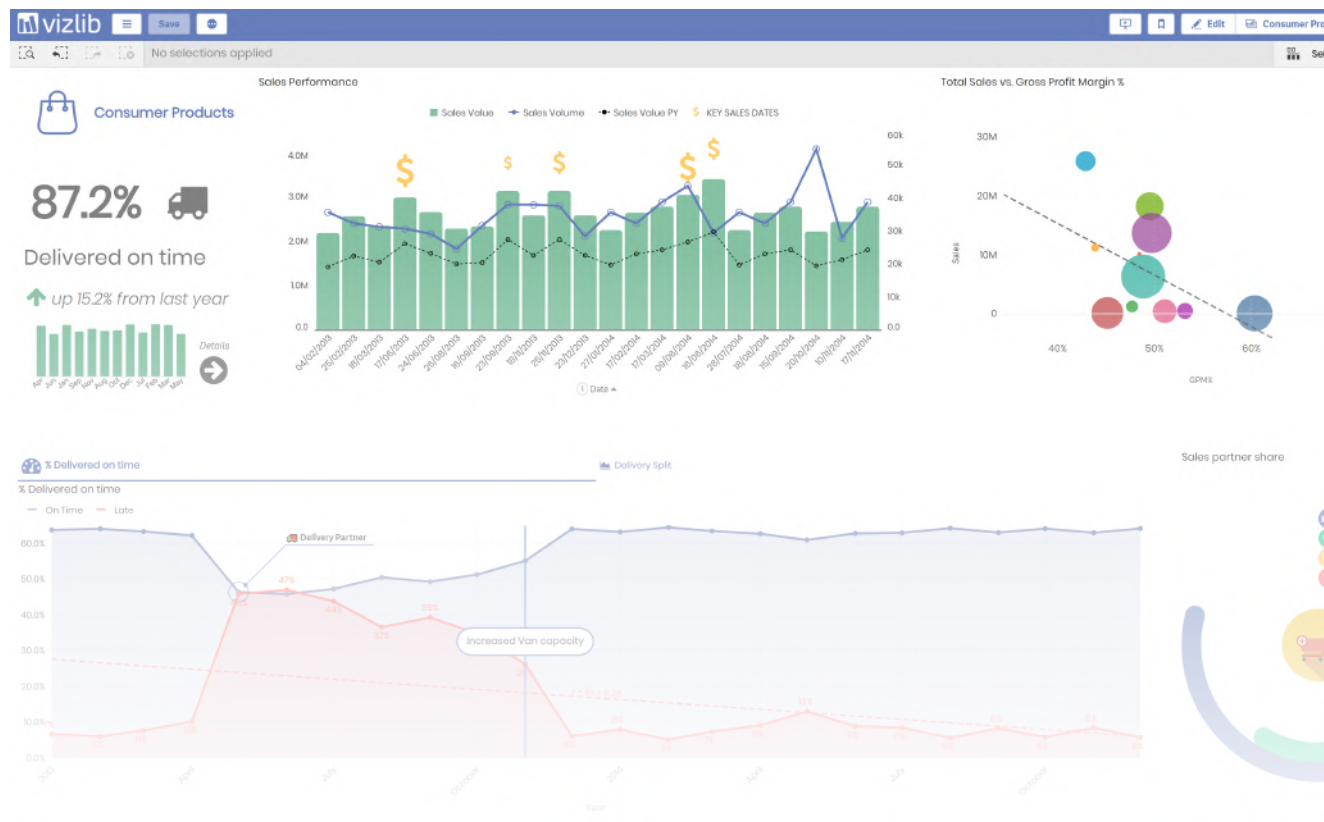
### Capabilities:



Actions



Templates





# UI Components

Built to help you create a more intuitive user experience, Vizlib's UI component capabilities are fully customisable and inherently powerful.

With rich styling and formatting options, they'll seamlessly blend in with your dashboard's unique design. And support for Vizlib Actions, Templates, configurable tooltips and the Vizlib Wizard makes these nifty charts indispensable to your apps.



Advanced Text Object



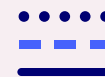
Slider



Calendar



Filter



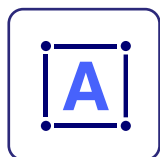
Line Object



Button



UI Components



## vizlib

### Advanced Text Object

The Vizlib Advanced Text Object takes the classic QlikView text object to a new level with added functionalities, such as support for HTML code, Vizlib Actions, tooltips and right-click copy functionality, interactivity and rich styling options.

#### Main Features:

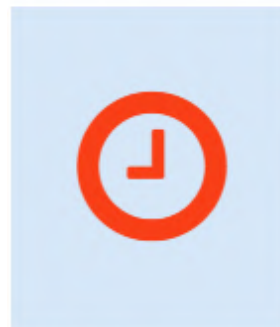
- Configurable tooltip
- Support for right-click copy functionality
- Multiple Action support such as Export Data, Selection in Field, Apply Bookmark and more

#### Capabilities:



Actions

Click me



Exporting 1,974 rows ↓

across all dimensions and  
all measures.

Click me! To  
see more  
effects

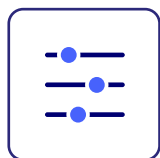


More shapes..



Change Border Radius

## UI Components



# vizlib Slider

The Vizlib Slider is an all-in-one component that enables users to define and set variable values in a slider. Get better dashboard control through Slider actions and create a powerful data discovery experience. The diverse range of presets, dynamic titles as well as time-saving templates, will kickstart your data exploration.

## Main Features:

- Support of one or two variables
- Support of Vizlib Actions
- Pre-defined slider styles presets
- Support of Vizlib Templates

## Capabilities:

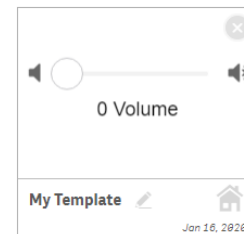


Actions



Templates

Vizlib Slider Templates		
Vizlib	Published in Vizlib	My Templates (1)
Search		



Custom Slider

4



4 Custom Slider



255



125



188



## UI Components



## vizlib Calendar

The Vizlib Calendar is an easy-to-use control component for Qlik Sense, providing many features such as auto-detection of dates, date ranges, font and size control, custom colours, pre-defined selections and lots of styling and formatting options.

### Main Features:

- Time-saving Wizard capability
- Single Date Picker or Date Range Picker options
- Expand or collapse calendar to save space

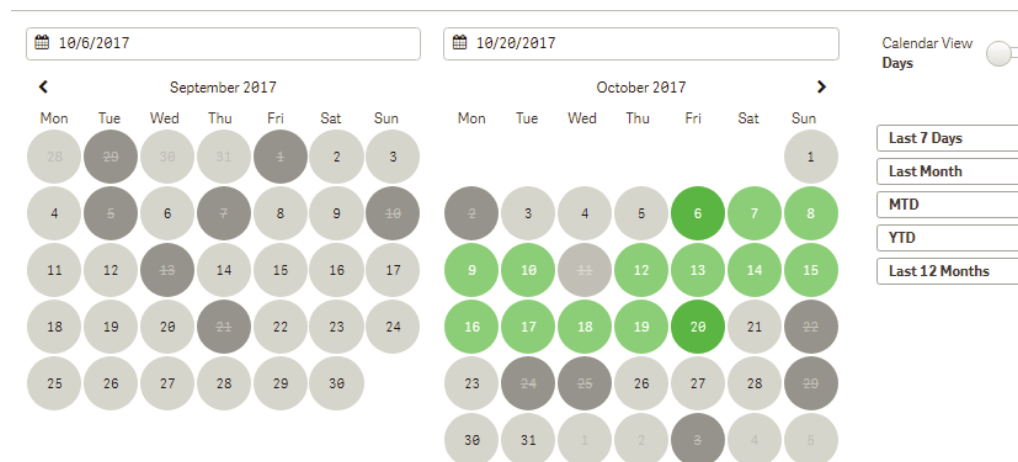
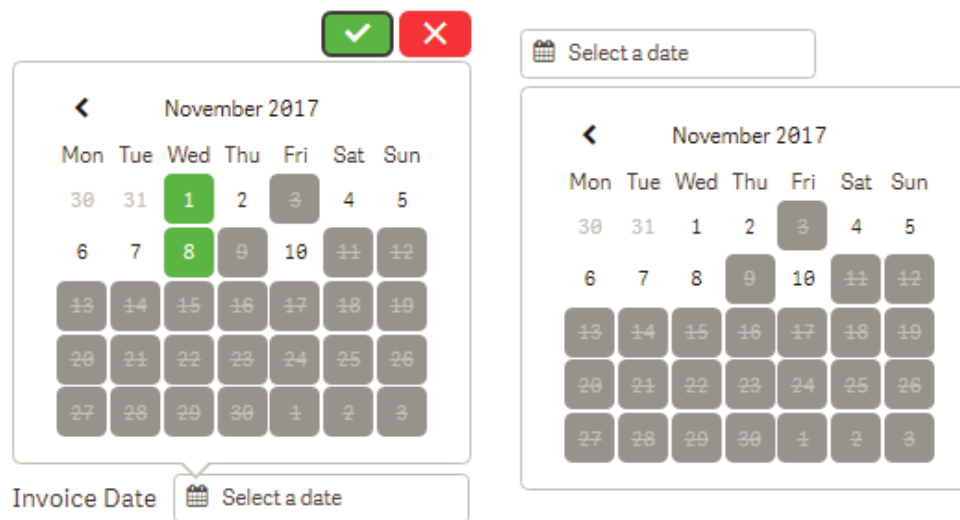
### Capabilities:



Actions



Templates



## UI Components



# vizlib

## Filter

The Vizlib Filter is a highly customisable filter component for Qlik Sense that streamlines selections in the data model. The advanced features include custom styling options and support for Vizlib Templates and Actions to save you time, as well as different views, such as Listbox, Buttongroup and Dropdown.

### Main Features:

- Support for Listbox, Buttongroup and Dropdown components
- One selected value option or default selections
- Support for right-click copy functionality
- Powerful and user-friendly search functionality
- Conditional show/hide of filter values

### Capabilities:



Actions



Templates

### LED

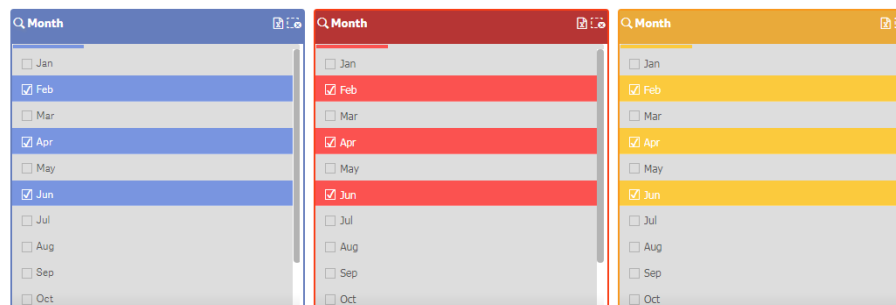


- ☐ Audio
- ☒ Cameras
- ☐ Computers
- ☐ Phones
- ☐ Smart Tech
- ☐ Tablets
- ☐ Televisions

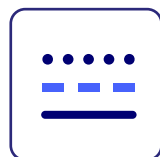
### TICK



- Audio
- Cameras ✓
- Computers
- Phones
- Smart Tech
- Tablets
- Televisions



UI Components

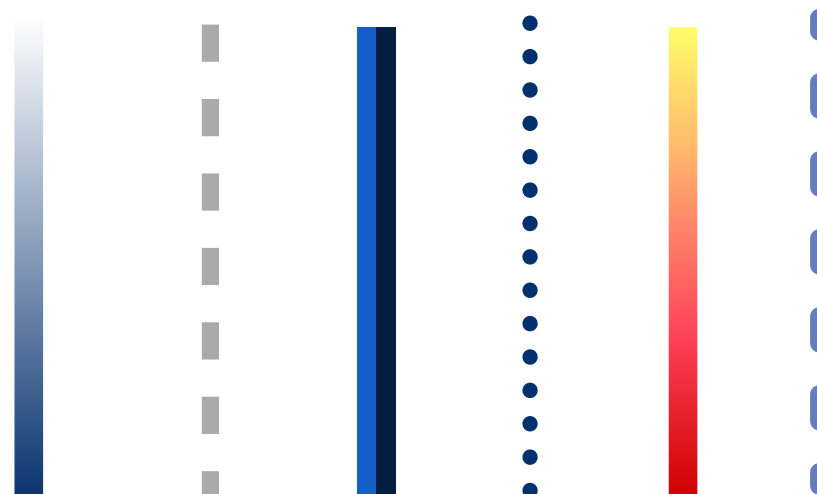


## vizlib Line Object

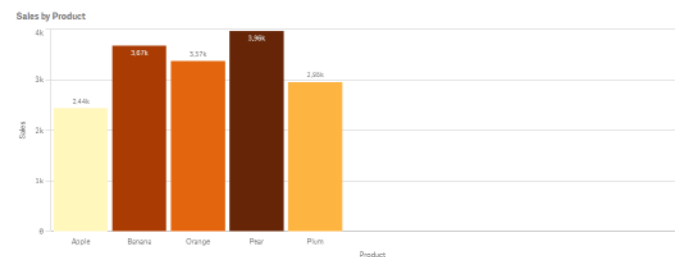
Vizlib Line Object is a versatile tool for neatly dividing and organising any dashboard! Choose the style and colour to suit your dashboard theme as well as alignment and orientation. Vizlib Line Object is the easiest and fastest way to organise and structure your Qlik Sense Application.

### Main Features:

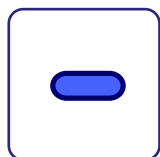
- Flexible positioning
- Choose your orientation style
- Interactivity support



The **Vizlib Line Object**, can be used to neatly divide and organise any dashboard. 🍷



## UI Components



## vizlib Button

Vizlib Button helps you create a more intuitive user experience in Qlik Sense. Combined with Vizlib Actions, it provides a guided analytics experience that empowers users to create efficient shortcuts, navigate the app better and discover insights with ease. Simplify and speed up the flow of data between apps with Vizlib Button API Integration. And, with support for Vizlib Templates, you can create user-friendly buttons in only a few clicks!

### Main Features:

- Vizlib Button API Integration
- Support for multiple buttons
- Individual management of colours, labels and icons for each button
- Manual or automatic button sizing

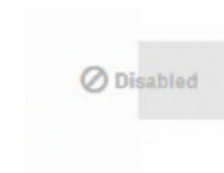
### Capabilities:



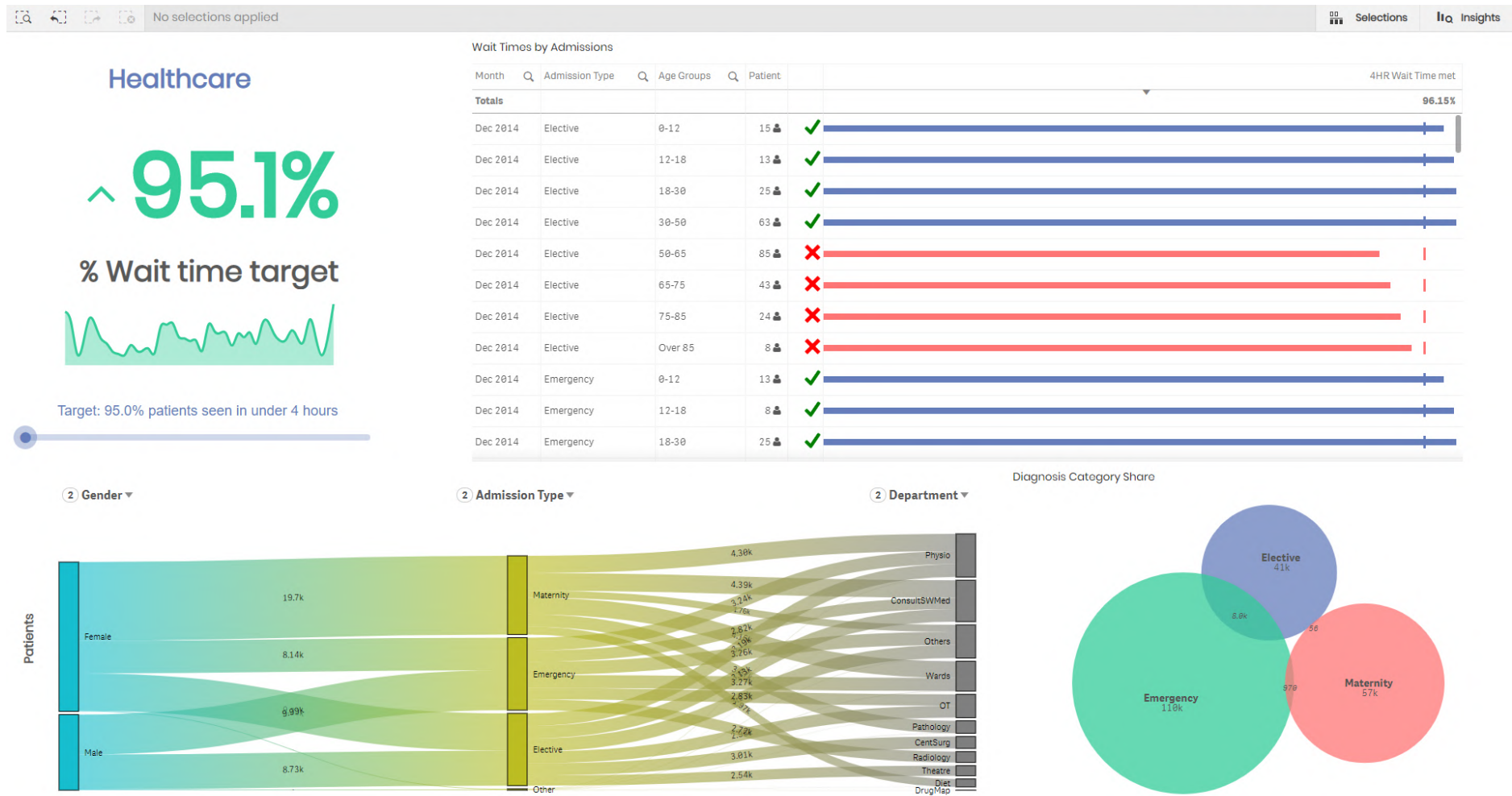
Actions



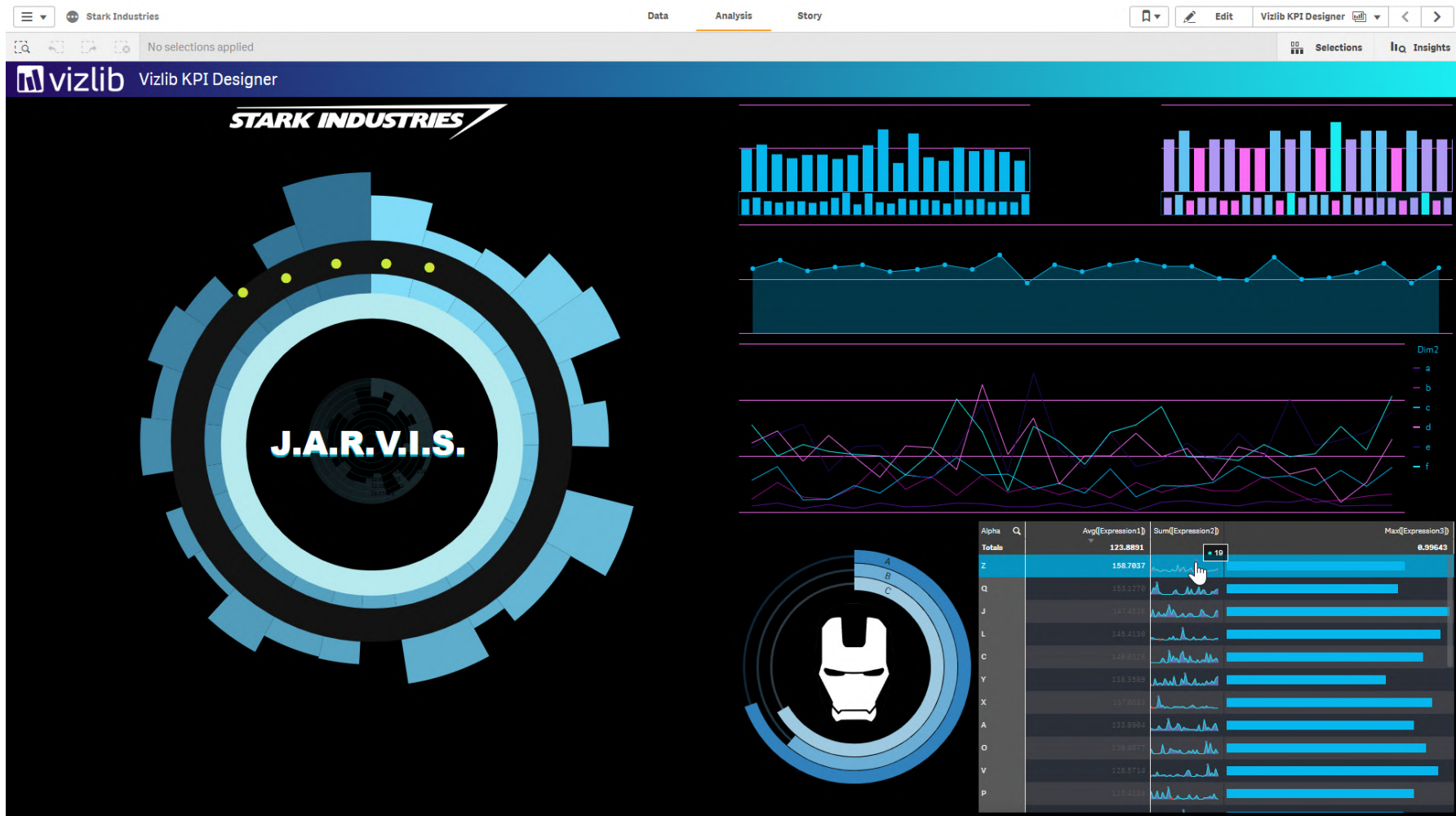
Templates



## Example Dashboards

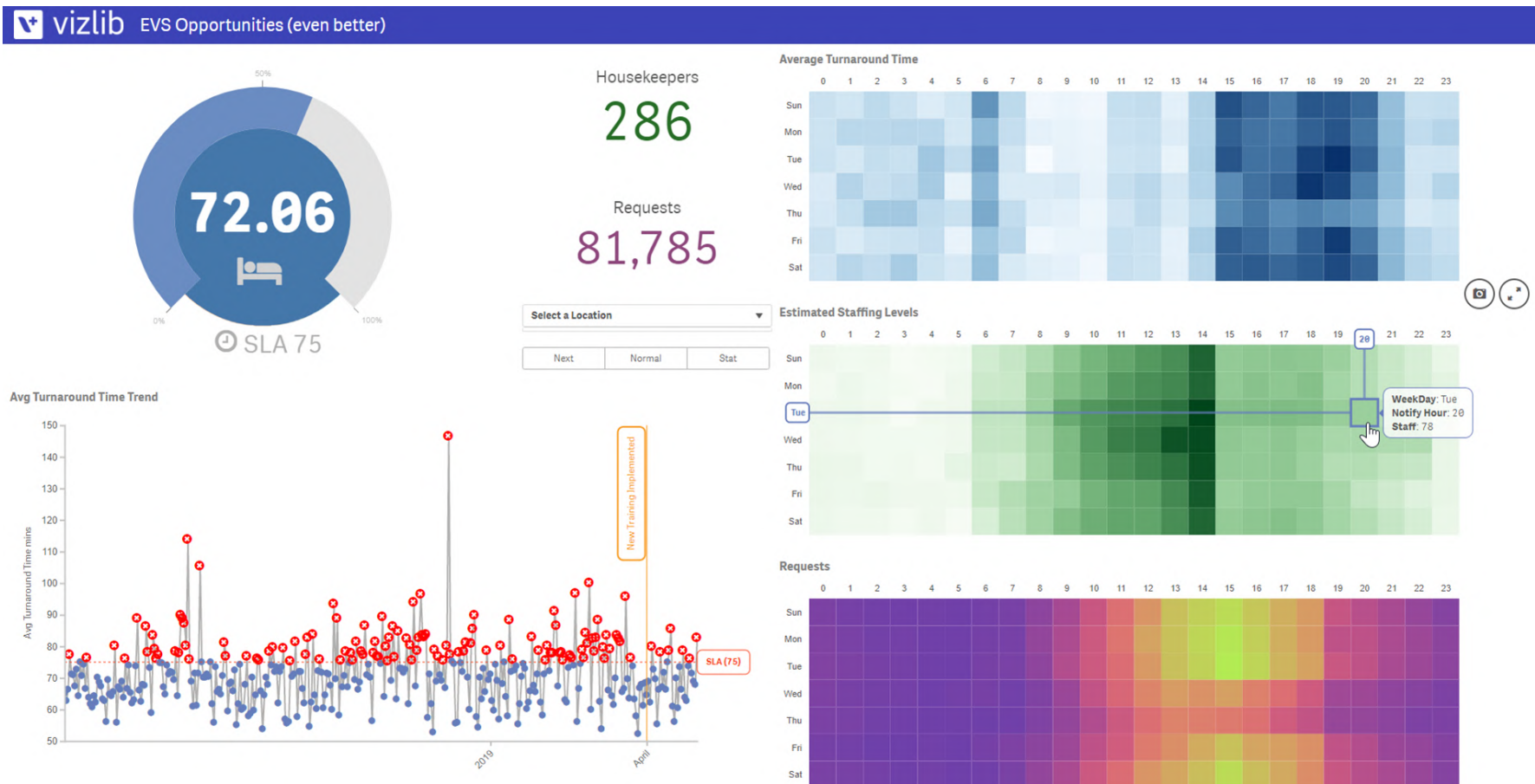


## Example Dashboards

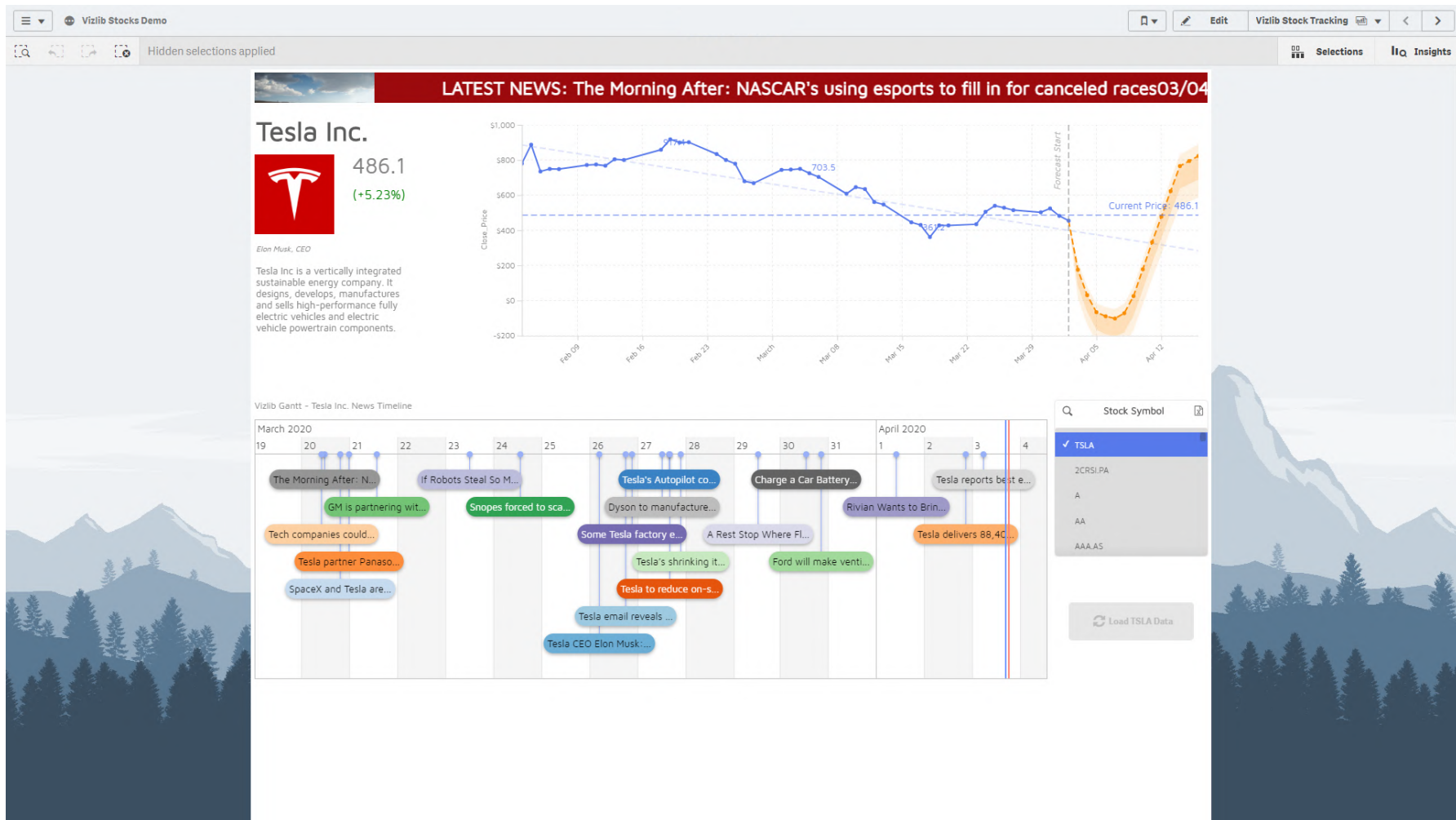




## Example Dashboards



## Example Dashboards





# FAQs

## Where can I find information on pricing?

Pricing, including all available user packages, is available for you to view in the Vizlib user portal - you need to login or click the link in your download email to access the portal: <https://www.vizlib.com/protected/upgrade>.

## Can I purchase extensions or categories separately?

Every package is designed to deliver a powerful analytics experience and provide you with the tools and features you need to achieve your dataviz goals. This means you can purchase a subscription for the chosen package, but not individual extensions or extension categories. We are delighted to schedule tutorial and demo sessions to help you explore and understand the capabilities of each product better – please get in touch if you'd like to learn more!

## Is Vizlib free to trial?

Vizlib is free to trial for up to 5 users.

One Vizlib user license allows an individual to use all Vizlib Extensions within the Qlik Sense environment based on their UserID, regardless of whether they're an app developer, app user or end user. A Vizlib license will account for all use cases for that one named user and is the same as an assigned Qlik Sense Token.

## What's included in the subscription?

The subscription includes standard product support and any upgrades and additions we make to the package over time. Typically, we support new versions of Qlik Sense at the time of their release or within a few days.

## Do you have a partner programme?

Yes! We run the Vizlib Partner Programme (VPP). To join the VPP you need to be a Qlik certified partner. For more information, please send us an email at [support@vizlib.com](mailto:support@vizlib.com) and we'll be in touch shortly.

## Will the extensions work in QAP/QSEoK (mashups)?

Yes!

## Will the extensions work in Story Mode?

Yes!

## Will the extensions work with nPrinting?

Yes!



## We build powerful value-added products for Qlik Sense.

Our feature-rich, intuitive Qlik Sense solutions empower data-driven organisations to extend their current analytics capabilities and uncover meaningful insights faster than ever before. We make data talk.

Leveraging our ready-to-use extension products, organisations go from mere data reporting to data storytelling in seconds, significantly boosting their time-to-market for new Qlik Sense projects. We are a valued partner to many of the world's leading businesses that seek fast, effective and branded solutions to boost data adoption across their organisation.

**Once you experience Vizlib, there's no going back.**



**library**  
vizlib



**gantt**  
vizlib



**self-service**  
vizlib



**collaboration**  
vizlib



**finance**  
vizlib

Get started with Vizlib for free at [vizlib.com](https://vizlib.com)